



PRODUCT CODE : EELE-025



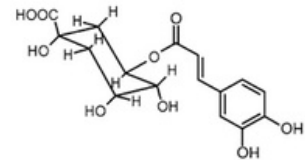
PRODUCT : Extract Expert™ Green Coffee Liquid Extract

INCI Name : Coffea Arabica Seed Extract

CAS No : 84650-00-0

EINECS/ELINCS No : 283-481-1

COSING REF No : 55646



Chlorogenic acid

TEST	SPECIFICATION	RESULT
APPEARANCE	COLORLESS TO PALE YELLOW	COMPLIES
pH	3.5 -8.5	COMPLIES
ODOR	ODORLESS TO CHARACTERISTIC SMELL	COMPLIES
HEAVY METALS	NMT 10 PPM	COMPLIES
MICROBIAL		
SALMONELLA	ABSENT	COMPLIES
PSEUDOMONAS	ABSENT	COMPLIES
E.COLI	ABSENT	COMPLIES
YEAST & MOULD	NMT 500 cfu/g	COMPLIES

Chem/IUPAC Name : Coffea Arabica Seed Extract is an extract of the beans of the Coffee plant, Coffea arabica L., Rubiaceae



COFFEA ARABICA SEED EXTRACT is classified as :

- Masking
- Skin conditioning

