



**PRODUCT CODE : EELE-030**

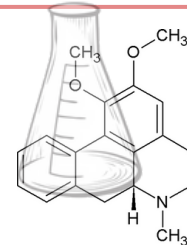
**PRODUCT : Extract Expert™ Indian Pink Lotus Water**

**INCI Name : Nelumbo Nucifera Flower Water**

**CAS No : 85085-51-4**

**EINECS/ELINCS No : 285-379-2**

**COSING REF No : 57328**



DESCRIPTION	SPECIFICATION
APPEARANCE	CLEAR LIQUID
COLOUR	YELLOW TO BROWN
ODOUR	COMPARABLE TO STANDARD
pH	4.0-5.0
RELATIVE DENSITY	1.017-1.027
REFRACTIVE INDEX	1.379-1.389
FLASH POINT	>100° C



**Extraction vehicle : Water.**

**Preservation : Sodium Benzoate, Potassium Sorbate.**

**Antioxidant : None.**

**Storage : Between 15-25°C, dark and closed containers.**

**Shelf Life : When stored accordingly, stable for 12 months.**

**Chem/IUPAC Name : Nelumbo Nucifera Flower Extract is an extract of the flowers of Nelumbo nucifera, Nymphaeaceae**

**NELUMBO NUCIFERA FLOWER EXTRACT is classified as :**

- Skin conditioning

Indian Pink Lotus Water benefits the skin by helping to soothe acne and reduce blemishes with its astringent properties. It also assists in reducing visible signs of ageing like wrinkles and fine lines to promote smooth and radiant-looking skin.

