



PRODUCT CODE : EECO2-033

SHELF LIFE : 3 YEARS



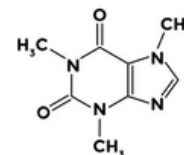
PRODUCT : Extract Expert™ CO2 - Roasted Coffee Robusta Oil

INCI Name : Coffea Canephora Oil

CAS No : 8001-67-0

EINECS/ELINCS No : 272-823-5

Cosing Ref : 55650



TEST PARAMETER	SPECIFICATION	RESULT
Appearance	Dark Brown Oily Liquid	Complies
Odour	Roasted Coffee Bean	Complies
Solubility	Insoluble in water, soluble in ethanol/oils	Freely Soluble in Ethanol, Insoluble in Water
Specific Gravity	1.475 - 1.500	Complies
Refractive Index	0.920 - 0.940	Complies
HEAVY METALS :		
Lead	< 10 ppm	-
Arsenic	< 3 ppm	0.2714 ppm
Mercury	< 1 ppm	0.1043 ppm
Cadmium	< 0.3 ppm	0.005 ppm
Caffeine	-	0.33%
Total Curcuminoides	Traces	Traces observed
Flash Point	> 150°F	150° F



Chem/IUPAC Name : Coffea Canephora Seed Oil is the extract of the seeds of Coffea canephora, Rubiaceae.

COFFEA CANEPHORA SEED OIL is classified as :

- Emollient
- Skin conditioning

